















**Worklist: 1063**

<u>LAB_CASE</u>	<u>ITEM</u>	<u>TASK_ID</u>	<u>DESCRIPTION</u>	
M2015-0303	1	53713	6.1.2 Blood Cannabinoids by LC	
M2015-4454	1	53729	6.1.2 Blood Cannabinoids by LC	
M2015-4571	1	53715	6.1.2 Blood Cannabinoids by LC	
M2015-4696	1	53718	6.1.2 Blood Cannabinoids by LC	
M2015-4752	1	53719	6.1.2 Blood Cannabinoids by LC	
M2015-4796	2	53720	6.1.2 Blood Cannabinoids by LC	
M2015-4803	2	53721	6.1.2 Blood Cannabinoids by LC	
P2015-2744	1	53730	6.1.2 Blood Cannabinoids by LC	
P2015-2779	1	53722	6.1.2 Blood Cannabinoids by LC	
P2015-2788	1	53723	6.1.2 Blood Cannabinoids by LC	
P2015-2790	1	53724	6.1.2 Blood Cannabinoids by LC	
P2015-2818	1	53725	6.1.2 Blood Cannabinoids by LC	
P2015-2837	1	53726	6.1.2 Blood Cannabinoids by LC	
P2015-2845	1	53727	6.1.2 Blood Cannabinoids by LC	

Reviewed 3/31/16



# Worklist Report

Worklist Path:	C:\MassHunter\ISP Methods\worklists\CS Combined 032816.wkl
Date Modified:	03/28/2016 02:48:43 PM
Date Printed:	03/28/2016 02:48:52 PM

## Worklist Run Parameters


Operator Name:	62340
Run Type:	Standard Start
Part of Method to Run:	Acquisition Only
Execution for Acquisition-DA:	Synchronous
Acquisition Method Path:	C:\MassHunter\ISP Methods\Acquisition
DA Method Path:	D:\MassHunter\methods
Data File Path:	C:\MassHunter\Data\1-28-16 test
Pre-Worklist Script:	---
Post-Worklist Script:	SCP_InstrumentStandby(){MH_Acq_Scripts.exe}
Acquisition Clean Up Script:	SCP_InstrumentStandby(){MH_Acq_Scripts.exe}
Overlapped Injection:	No
Clear sample selection after run:	Yes
Wait Time for Ready(Min):	10
Threshold Disk Value(GB):	10
Comment:	---

## Plate Barcode Information

Plate	Barcode
P1	
P2	

## Worklist Table

Sample Position	Sample Name	Method	Data File	Sample Type	Level Name	Comment	Info.
P2-A1	Blank	isp blood cannabinoids Poky 2016.m	Blank1-r001.d	Blank		AM 6.1.2 Cannabinoids by LCQQQ	
P2-A1	Blank	isp blood cannabinoids Poky 2016.m	Blank2-r001.d	Blank		AM 6.1.2 Cannabinoids by LCQQQ	
P2-A2	Blood: 1_5 ng/mL	isp blood cannabinoids Poky 2016.m	B_CAL1-r001.d	Calibration	1	AM 6.1.2 Cannabinoids by LCQQQ	c-THC @5ng/mL, all others @1 ng/mL
P2-A3	Blood: 2_10 ng/mL	isp blood cannabinoids Poky 2016.m	B_CAL2_r001.d	Calibration	2	AM 6.1.2 Cannabinoids by LCQQQ	c-THC @10ng/mL, all others @2 ng/mL
P2-A4	Blood: 5_25 ng/mL	isp blood cannabinoids Poky 2016.m	B_CAL3_r001.d	Calibration	3	AM 6.1.2 Cannabinoids by LCQQQ	c-THC @25ng/mL, all others @5 ng/mL
P2-A5	Blood: 10_50 ng/mL	isp blood cannabinoids Poky 2016.m	B_CAL4_r001.d	Calibration	4	AM 6.1.2 Cannabinoids by LCQQQ	c-THC @50ng/mL, all others @10 ng/mL
P2-A6	Blood: 25_125 ng/mL	isp blood cannabinoids Poky 2016.m	B_CAL5_r001.d	Calibration	5	AM 6.1.2 Cannabinoids by LCQQQ	c-THC @125ng/mL, all

Sample Position	Sample Name	Method	Data File	Sample Type	Level Name	Comment	Info. 
							others @25 ng/mL
P2-A7	Blood: 50_250 ngmL	isp blood cannabinoids Poky 2016.m	B_CAL6_r001.d	Calibration	6	AM 6.1.2 Cannabinoids by LCQQQ	c-THC @250ng/mL, all others @50 ng/mL
P2-A8	Blood: 100_500 ngmL	isp blood cannabinoids Poky 2016.m	B_CAL7_r001.d	Calibration	7	AM 6.1.2 Cannabinoids by LCQQQ	c-THC @500ng/mL, all others @100 ng/mL
P2-A1	Blank	isp blood cannabinoids Poky 2016.m	Carryover blank1_r001.d	Blank		AM 6.1.2 Cannabinoids by LCQQQ	
P2-A9	Blood Negative Control	isp blood cannabinoids Poky 2016.m	B-NC-r001.d	Sample		AM 6.1.2 Cannabinoids by LCQQQ	Negative Blood UTAK Lot B0689
P2-B1	Blood 3_15ngmL	isp blood cannabinoids Poky 2016.m	B-3_15-r001.d	Sample		AM 6.1.2 Cannabinoids by LCQQQ	c-THC @15ng/mL, all others @3 ng/mL
P2-A9	Blank M2015-4454-1	isp blood cannabinoids Poky 2016.m	M2015-4454-1_BLK_r001.d	Blank		AM 6.1.2 Cannabinoids by LCQQQ	
P2-B2	M2015-4454-1	isp blood cannabinoids Poky 2016.m	M2015-4454-1-r001.d	Sample		AM 6.1.2 Cannabinoids by LCQQQ	Blood
P2-A9	Blank P2015-2744-1	isp blood cannabinoids Poky 2016.m	P2015-2744-1_BLK_r001.d	Blank		AM 6.1.2 Cannabinoids by LCQQQ	
P2-B3	P2015-2744-1	isp blood cannabinoids Poky 2016.m	P2015-2744-1-r001.d	Sample		AM 6.1.2 Cannabinoids by LCQQQ	Blood
P2-A9	Blank M2015-0303-1	isp blood cannabinoids Poky 2016.m	M2015-0303-1_BLK_r001.d	Blank		AM 6.1.2 Cannabinoids by LCQQQ	
P2-B4	M2015-0303-1	isp blood cannabinoids Poky 2016.m	M2015-0303-1-r001.d	Sample		AM 6.1.2 Cannabinoids by LCQQQ	Blood
P2-A9	Blank M2015-4571-1	isp blood cannabinoids Poky 2016.m	M2015-4571-1_BLK_r001.d	Blank		AM 6.1.2 Cannabinoids by LCQQQ	
P2-B5	M2015-4571-1	isp blood cannabinoids Poky 2016.m	M2015-4571-1-r001.d	Sample		AM 6.1.2 Cannabinoids by LCQQQ	Blood
P2-A9	Blank M2015-4696-1	isp blood cannabinoids Poky 2016.m	M2015-4696-1_BLK_r001.d	Blank		AM 6.1.2 Cannabinoids by LCQQQ	
P2-B6	M2015-4696-1	isp blood cannabinoids Poky 2016.m	M2015-4696-1-r001.d	Sample		AM 6.1.2 Cannabinoids by LCQQQ	Blood
P2-A1	Blank	isp blood cannabinoids Poky 2016.m	cann-Carryover blank2_r001.d	Blank		AM 6.1.2 Cannabinoids by LCQQQ	
P2-C3	Blood 25_125ngmL	isp blood cannabinoids Poky 2016.m	cann-B-25_125-r001.d	Sample		AM 6.1.2 Cannabinoids by LCQQQ	c-THC @125ng/mL, all others @25 ng/mL
P2-A9	Blank M2015-4752-1	isp blood cannabinoids Poky 2016.m	M2015-4752-1_BLK_r001.d	Blank		AM 6.1.2 Cannabinoids by LCQQQ	
P2-B7	M2015-4752-1	isp blood cannabinoids Poky 2016.m	M2015-4752-1-r001.d	Sample		AM 6.1.2 Cannabinoids by LCQQQ	Blood

Sample Position	Sample Name	Method	Data File	Sample Type	Level Name	Comment	Info. ۵
P2-A9	Blank M2015-4796-2	isp blood cannabinoids Poky 2016.m	M2015-4796-2_BLK_r001.d	Blank		AM 6.1.2 Cannabinoids by LCQQQ	
P2-B8	M2015-4796-2	isp blood cannabinoids Poky 2016.m	M2015-4796-2-r001.d	Sample		AM 6.1.2 Cannabinoids by LCQQQ	Blood
P2-A9	Blank M2015-4803-2	isp blood cannabinoids Poky 2016.m	M2015-4803-2_BLK_r001.d	Blank		AM 6.1.2 Cannabinoids by LCQQQ	
P2-B9	M2015-4803-2	isp blood cannabinoids Poky 2016.m	M2015-4803-2-r001.d	Sample		AM 6.1.2 Cannabinoids by LCQQQ	Blood
P2-A9	Blank P2015-2779-1	isp blood cannabinoids Poky 2016.m	P2015-2779-1_BLK_r001.d	Blank		AM 6.1.2 Cannabinoids by LCQQQ	
P2-C1	P2015-2779-1	isp blood cannabinoids Poky 2016.m	P2015-2779-1-r001.d	Sample		AM 6.1.2 Cannabinoids by LCQQQ	Blood
P2-A9	Blank P2015-2788-1	isp blood cannabinoids Poky 2016.m	P2015-2788-1_BLK_r001.d	Blank		AM 6.1.2 Cannabinoids by LCQQQ	
P2-C2	P2015-2788-1	isp blood cannabinoids Poky 2016.m	P2015-2788-1-r001.d	Sample		AM 6.1.2 Cannabinoids by LCQQQ	Blood
P2-A9	Blank P2015-2790-1	isp blood cannabinoids Poky 2016.m	P2015-2790-1_BLK_r001.d	Blank		AM 6.1.2 Cannabinoids by LCQQQ	
P2-C4	P2015-2790-1	isp blood cannabinoids Poky 2016.m	P2015-2790-1-r001.d	Sample		AM 6.1.2 Cannabinoids by LCQQQ	Blood
P2-A9	Blank P2015-2818-1	isp blood cannabinoids Poky 2016.m	P2015-2818-1_BLK_r001.d	Blank		AM 6.1.2 Cannabinoids by LCQQQ	
P2-C5	P2015-2818-1	isp blood cannabinoids Poky 2016.m	P2015-2818-1-r001.d	Sample		AM 6.1.2 Cannabinoids by LCQQQ	Blood
P2-A9	Blank P2015-2837-1	isp blood cannabinoids Poky 2016.m	P2015-2837-1_BLK_r001.d	Blank		AM 6.1.2 Cannabinoids by LCQQQ	
P2-C6	P2015-2837-1	isp blood cannabinoids Poky 2016.m	P2015-2837-1-r001.d	Sample		AM 6.1.2 Cannabinoids by LCQQQ	
P2-A9	Blank P2015-2845-1	isp blood cannabinoids Poky 2016.m	P2015-2845-1_BLK_r001.d	Blank		AM 6.1.2 Cannabinoids by LCQQQ	Blood
P2-C7	P2015-2845-1	isp blood cannabinoids Poky 2016.m	P2015-2845-1-r001.d	Sample		AM 6.1.2 Cannabinoids by LCQQQ	Blood
P2-A1	Blank	isp blood cannabinoids Poky 2016.m	Blank3-r001.d	Blank		AM 6.1.2 Cannabinoids by LCQQQ	Blood
P1-F9	Blank	Benzos_Z_Drugs_ACN_FA_ISP_2015.m	BZ-Blank1-r001.d	Blank		AM 6.1.2 Cannabinoids by LCQQQ	Blood
P1-F9	Blank	Benzos_Z_Drugs_ACN_FA_ISP_2015.m	BZ-Blank2-r001.d	Blank		AM 6.1.2 Cannabinoids by LCQQQ	Blood
P1-F8	5 ng/mL	Benzos_Z_Drugs_ACN_FA_ISP_2015.m	BZ-5 ng/mL-r001.d	Calibration	1	AM 6.1.2 Cannabinoids by LCQQQ	Blood
P1-F7	10 ng/mL	Benzos_Z_Drugs_ACN_FA_ISP_2015.m	BZ-10 ng/mL-r001.d	Calibration	2	AM 6.1.1 Benzo and Z by LCQQQ	

Sample Position	Sample Name	Method	Data File	Sample Type	Level Name	Comment	Info. ๕
P1-F6	25 ngmL	Benzos_Z_Drugs_ACN_FA_ISP_2015.m	BZ-25 ngmL_r001.d	Calibration	3	AM 6.1.1 Benzo and Z by LCQQQ	
P1-F5	50 ngmL	Benzos_Z_Drugs_ACN_FA_ISP_2015.m	BZ-50 ngmL_r001.d	Calibration	4	AM 6.1.1 Benzo and Z by LCQQQ	
P1-F4	100 ngmL	Benzos_Z_Drugs_ACN_FA_ISP_2015.m	BZ-100 ngmL_r001.d	Calibration	5	AM 6.1.1 Benzo and Z by LCQQQ	
P1-F3	500 ngmL	Benzos_Z_Drugs_ACN_FA_ISP_2015.m	BZ-500 ngmL_r001.d	Calibration	6	AM 6.1.1 Benzo and Z by LCQQQ	
P1-F2	1000 ngmL	Benzos_Z_Drugs_ACN_FA_ISP_2015.m	BZ-1000 ngmL_r001.d	Calibration	7	AM 6.1.1 Benzo and Z by LCQQQ	
P1-F1	3000 ngmL	Benzos_Z_Drugs_ACN_FA_ISP_2015.m	BZ-3000 ngmL_r001.d	Calibration	8	AM 6.1.1 Benzo and Z by LCQQQ	
P1-F9	Blank	Benzos_Z_Drugs_ACN_FA_ISP_2015.m	BZ-Carryover blank1_r001.d	Blank		AM 6.1.1 Benzo and Z by LCQQQ	
P1-E9	Negative Blood Control	Benzos_Z_Drugs_ACN_FA_ISP_2015.m	BZ-NC-B_r001.d	Sample		AM 6.1.1 Benzo and Z by LCQQQ	UTAK Negative Whole Blood LOT B0689
P1-E8	Positive Blood Control	Benzos_Z_Drugs_ACN_FA_ISP_2015.m	BZ-PC-B-r001.d	Sample		AM 6.1.1 Benzo and Z by LCQQQ	200 ng/mL Benzodiazepines Mix Cerilliant lot FE012413-02 in neg LOT B0130
P1-E9	Blank - M2015-4520-1	Benzos_Z_Drugs_ACN_FA_ISP_2015.m	BZ-Carryover blank-M2015-4520-1_r001.d	Blank		AM 6.1.1 Benzo and Z by LCQQQ	
P1-E7	M2015-4520-1	Benzos_Z_Drugs_ACN_FA_ISP_2015.m	BZ-M2015-4520-1-r001.d	Sample		AM 6.1.1 Benzo and Z by LCQQQ	Blood
P1-E9	Blank - M2015-4571-1	Benzos_Z_Drugs_ACN_FA_ISP_2015.m	BZ-Carryover blank-M2015-4571-1_r001.d	Blank		AM 6.1.1 Benzo and Z by LCQQQ	
P1-E6	M2015-4571-1	Benzos_Z_Drugs_ACN_FA_ISP_2015.m	BZ-M2015-4571-1-r001.d	Sample		AM 6.1.1 Benzo and Z by LCQQQ	Blood
P1-E9	Blank - M2015-4585-1	Benzos_Z_Drugs_ACN_FA_ISP_2015.m	BZ-Carryover blank-M2015-4585-1_r001.d	Blank		AM 6.1.1 Benzo and Z by LCQQQ	
P1-E5	M2015-4585-1	Benzos_Z_Drugs_ACN_FA_ISP_2015.m	BZ-M2015-4585-1-r001.d	Sample		AM 6.1.1 Benzo and Z by LCQQQ	Blood
P1-E9	Blank - M2015-4696-1	Benzos_Z_Drugs_ACN_FA_ISP_2015.m	BZ-Carryover blank-M2015-4696-1_r001.d	Blank		AM 6.1.1 Benzo and Z by LCQQQ	
P1-E4	M2015-4696-1	Benzos_Z_Drugs_ACN_FA_ISP_2015.m	BZ-M2015-4696-1-r001.d	Sample		AM 6.1.1 Benzo and Z by LCQQQ	Blood
P1-E9	Blank - M2015-4796-2	Benzos_Z_Drugs_ACN_FA_ISP_2015.m	BZ-Carryover blank-M2015-4796-2_r001.d	Blank		AM 6.1.1 Benzo and Z by LCQQQ	
P1-E3	M2015-4796-2	Benzos_Z_Drugs_ACN_FA_ISP_2015.m	BZ-M2015-4796-2-r001.d	Sample		AM 6.1.1 Benzo and Z by LCQQQ	Blood
P1-E9	Blank - P2015-2846-1	Benzos_Z_Drugs_ACN_FA_ISP_2015.m	BZ-Carryover blank-P2015-2846-1_r001.d	Blank		AM 6.1.1 Benzo and Z by LCQQQ	
P1-E2		Benzos_Z_Drugs_ACN_FA_ISP_2015.m		Sample			Blood

Sample Position	Sample Name	Method	Data File	Sample Type	Level Name	Comment	Info. ٢
	P2015-2846-1		BZ-P2015-2846-1-r001.d			AM 6.1.1 Benzo and Z by LCQQQ	
P1-F9	Blank	Benzos_Z_Drugs_ACN_FA_ISP_2015.m	BZ-Carryover blank3_r001.d	Blank		AM 6.1.1 Benzo and Z by LCQQQ	

# ISP Forensics Calibration Curve Report

CS

**Batch Data Path** C:\MassHunter\Data\2016\Combined\032816 CS\QuantResults\032816 CANN.batch.bin

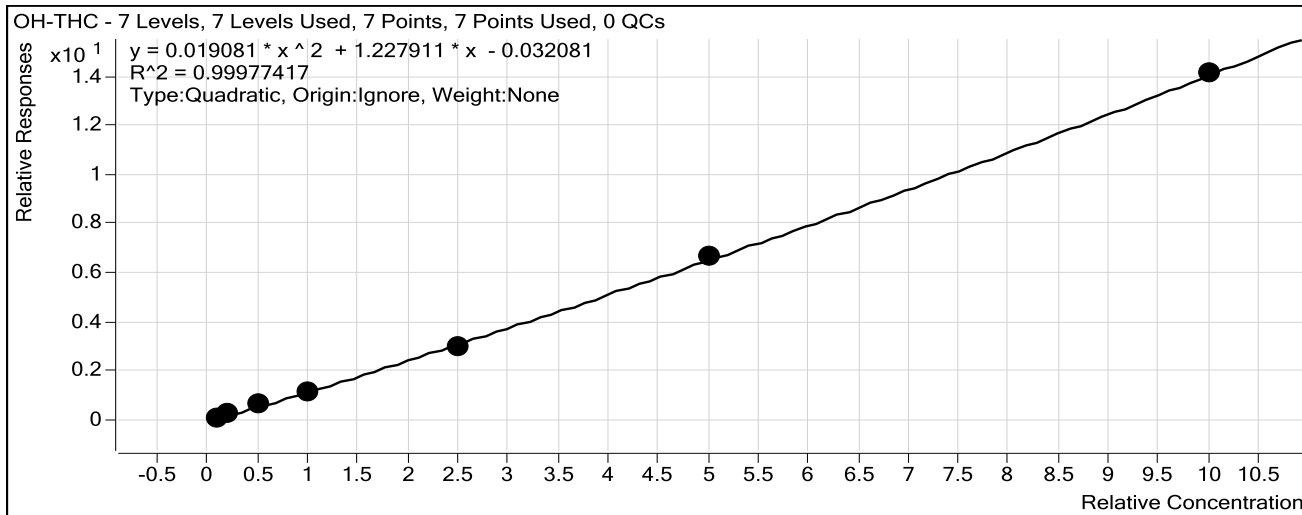
**Last Calib Update** 3/30/2016 2:42 PM

**Analyst Name**

ISP TOX

**Target Compound** *OH-THC*

**Internal Standard** *OH-THC-d3*



Sample	Level	Enabled	Exp Conc	Final Conc	Accuracy
Blood: 1_5 ng/mL	1	<input checked="" type="checkbox"/>	1	1.2	116.8
Blood: 2_10 ng/mL	2	<input checked="" type="checkbox"/>	2	2.4	118.5
Blood: 5_25 ng/mL	3	<input checked="" type="checkbox"/>	5	5.2	103.6
Blood: 10_50 ng/mL	4	<input checked="" type="checkbox"/>	10	9.7	96.6
Blood: 25_125 ng/mL	5	<input checked="" type="checkbox"/>	25	24.0	95.9
Blood: 50_250 ng/mL	6	<input checked="" type="checkbox"/>	50	50.8	101.5
Blood: 100_500 ng/mL	7	<input checked="" type="checkbox"/>	100	99.9	99.9

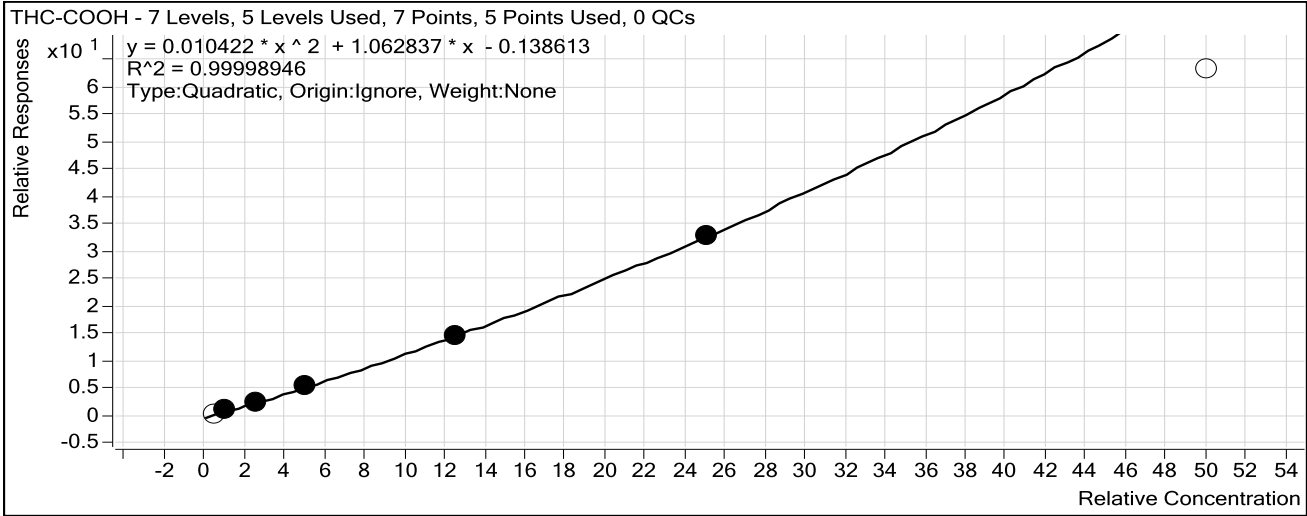
# ISP Forensics Calibration Curve Report

**Batch Data Path** C:\MassHunter\Data\2016\Combined\032816 CS\QuantResults\032816 CANN.batch.bin

**Last Calib Update** 3/30/2016 2:42 PM

**Analyst Name** ISP TOX

**Target Compound** *THC-COOH*  
**Internal Standard** *THC-COOH-d3*



Sample	Level	Enabled	Exp Conc	Final Conc	Accuracy
Blood: 1_5 ng/mL	1	<input type="checkbox"/>	5	5.1	102.9
Blood: 2_10 ng/mL	2	<input checked="" type="checkbox"/>	10	10.5	104.9
Blood: 5_25 ng/mL	3	<input checked="" type="checkbox"/>	25	24.4	97.6
Blood: 10_50 ng/mL	4	<input checked="" type="checkbox"/>	50	50.0	100.0
Blood: 25_125 ng/mL	5	<input checked="" type="checkbox"/>	125	125.1	100.1
Blood: 50_250 ng/mL	6	<input checked="" type="checkbox"/>	250	250.0	100.0
Blood: 100_500 ng/mL	7	<input type="checkbox"/>	500	421.0	84.2



# ISP Forensics Calibration Curve Report

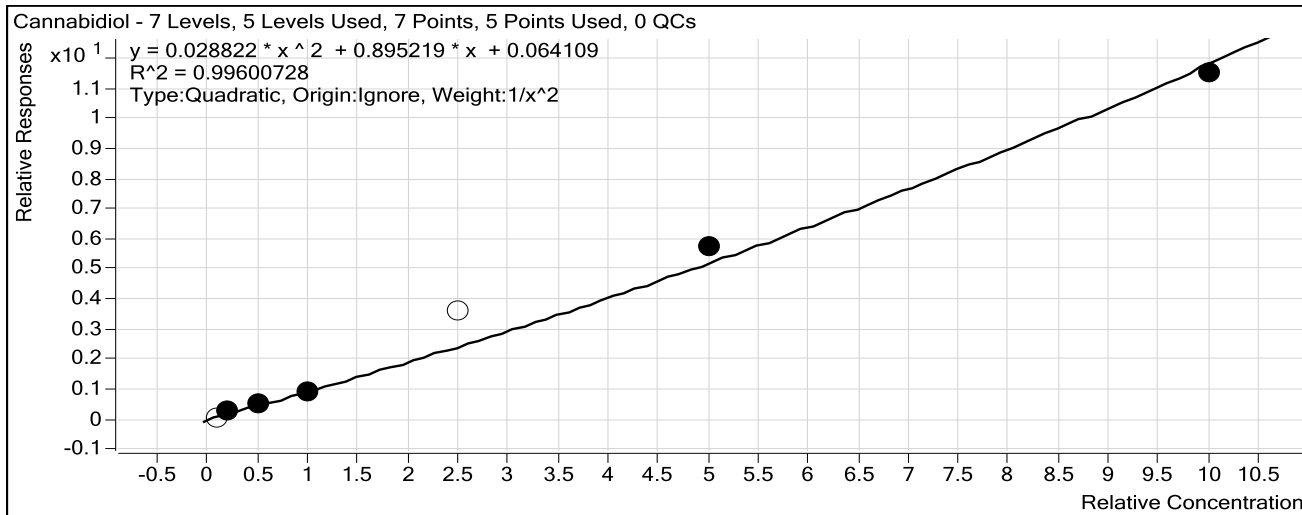
**Batch Data Path** C:\MassHunter\Data\2016\Combined\032816 CS\QuantResults\032816 CANN.batch.bin

**Last Calib Update** 3/30/2016 2:42 PM

**Analyst Name** ISP TOX

**Target Compound** *Cannabidiol*

**Internal Standard** *Cannabidiol-d3*



Sample	Level	Enabled	Exp Conc	Final Conc	Accuracy
Blood: 1_5 ng/mL	1	<input type="checkbox"/>	1	0.1	13.5
Blood: 2_10 ng/mL	2	<input checked="" type="checkbox"/>	2	2.0	101.7
Blood: 5_25 ng/mL	3	<input checked="" type="checkbox"/>	5	4.9	97.1
Blood: 10_50 ng/mL	4	<input checked="" type="checkbox"/>	10	9.6	95.9
Blood: 25_125 ng/mL	5	<input type="checkbox"/>	25	35.2	140.7
Blood: 50_250 ng/mL	6	<input checked="" type="checkbox"/>	50	53.8	107.6
Blood: 100_500 ng/mL	7	<input checked="" type="checkbox"/>	100	97.2	97.2

# ISP Forensics Calibration Curve Report

**Batch Data Path** C:\MassHunter\Data\2016\Combined\032816 CS\QuantResults\032816 CANN.batch.bin

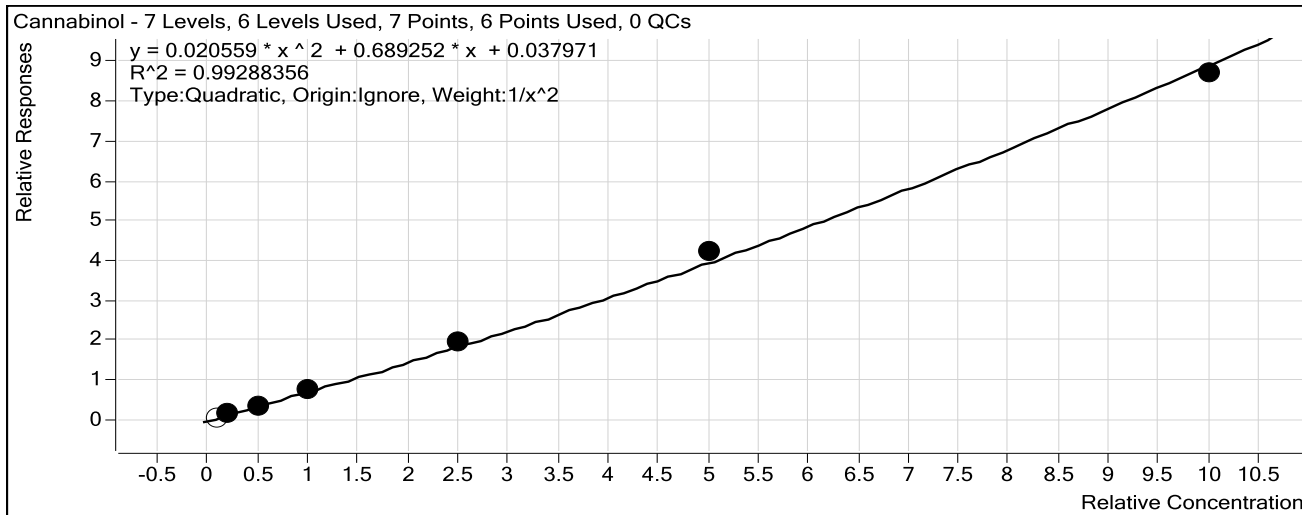
**Last Calib Update** 3/30/2016 2:42 PM

**Analyst Name**

ISP TOX

**Target Compound** *Cannabinol*

**Internal Standard** *Cannabinol-d3*



Sample	Level	Enabled	Exp Conc	Final Conc	Accuracy
Blood: 1_5 ng/mL	1	<input type="checkbox"/>	1	0.6	57.2
Blood: 2_10 ng/mL	2	<input checked="" type="checkbox"/>	2	2.1	104.6
Blood: 5_25 ng/mL	3	<input checked="" type="checkbox"/>	5	4.3	85.6
Blood: 10_50 ng/mL	4	<input checked="" type="checkbox"/>	10	10.4	103.6
Blood: 25_125 ng/mL	5	<input checked="" type="checkbox"/>	25	25.7	102.9
Blood: 50_250 ng/mL	6	<input checked="" type="checkbox"/>	50	52.7	105.4
Blood: 100_500 ng/mL	7	<input checked="" type="checkbox"/>	100	97.4	97.4

# ISP Forensics Calibration Curve Report

**Batch Data Path** C:\MassHunter\Data\2016\Combined\032816 CS\QuantResults\032816 CANN.batch.bin

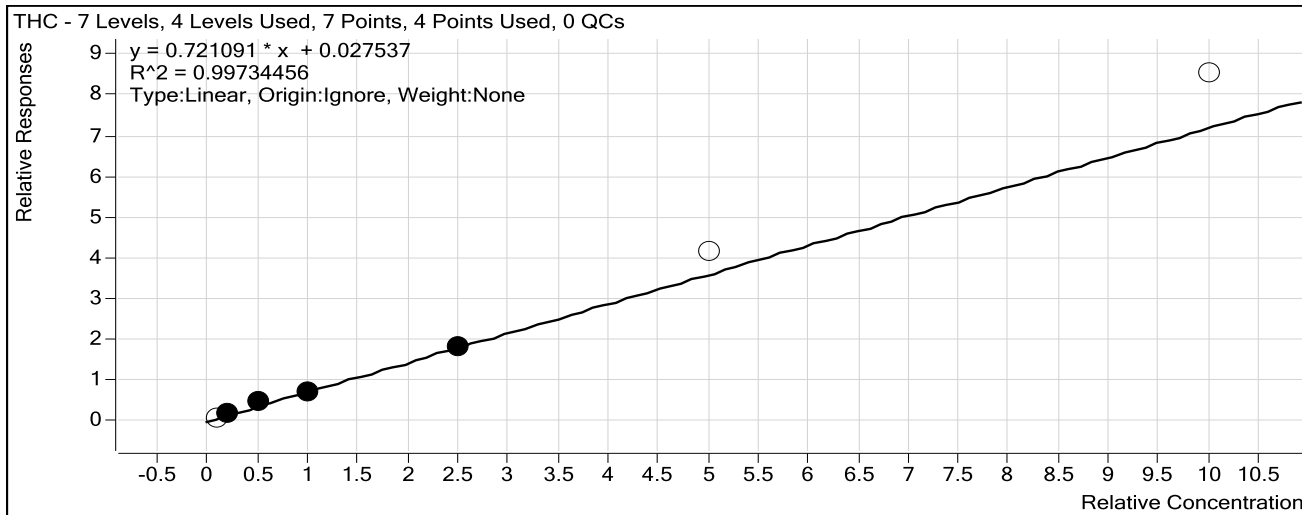
**Last Calib Update** 3/30/2016 2:42 PM

**Analyst Name**

ISP TOX

**Target Compound** *THC*

**Internal Standard** *THC-d3*



Sample	Level	Enabled	Exp Conc	Final Conc	Accuracy
Blood: 1_5 ng/mL	1	<input type="checkbox"/>	1	0.7	74.9
Blood: 2_10 ng/mL	2	<input checked="" type="checkbox"/>	2	1.7	83.7
Blood: 5_25 ng/mL	3	<input checked="" type="checkbox"/>	5	5.7	114.3
Blood: 10_50 ng/mL	4	<input checked="" type="checkbox"/>	10	9.5	95.4
Blood: 25_125 ng/mL	5	<input checked="" type="checkbox"/>	25	25.1	100.3
Blood: 50_250 ng/mL	6	<input type="checkbox"/>	50	57.2	114.4
Blood: 100_500 ng/mL	7	<input type="checkbox"/>	100	117.9	117.9

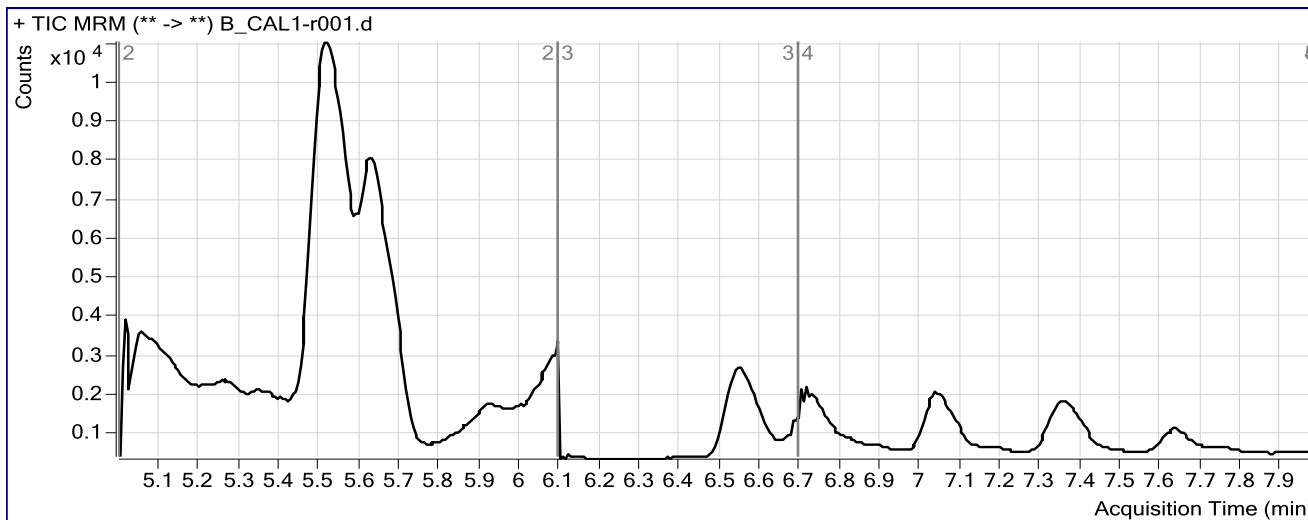
# ISP FORENSICS Pocatello Cannabinoid Analysis Report

<b>Batch Data Path</b>	C:\MassHunter\Data\2016\Combined\032816 CS\QuantResults\032816 CANN.batch.bin		
<b>Analysis Time</b>	3/30/2016 2:42 PM	<b>Analyst Name</b>	ISPUser
<b>Report Time</b>	3/30/2016 2:45 PM	<b>Reporter Name</b>	ISPUser
<b>Last Calib Update</b>	3/30/2016 2:42 PM	<b>Batch State</b>	Processed

### Analysis Info

<b>Acq Time</b>	2016-03-28 15:18	<b>Data File</b>	B_CAL1-r001.d
<b>Sample Type</b>	Calibration	<b>Sample Name</b>	Blood: 1_5 ng/mL
<b>Dilution</b>	1	<b>Acq Method</b>	isp blood cannabinoids Poky 2016.m
<b>Position</b>	P2-A2	<b>Sample Info</b>	c-THC @5ng/mL, all others @1 ng/mL
<b>Inj Vol</b>	-1	<b>Comment</b>	AM 6.1.2 Cannabinoids by LCQQQ

### Sample Chromatogram



### Results

Compound	ISTD Compound	RT	Response	ISTD Resp	Resp Ratio	Final Conc
OH-THC	OH-THC-d3	5.533	4438	39752	0.1116	1.1683
THC-COOH	THC-COOH-d3	5.636	2958	7195	0.4111	5.1457
Cannabidiol	Cannabidiol-d3	6.553	342	4494	0.0762	0.1348
Cannabinol	Cannabinol-d3	7.069	434	5597	0.0775	0.5722
THC	THC-d3	7.352	228	2800	0.0815	0.7488

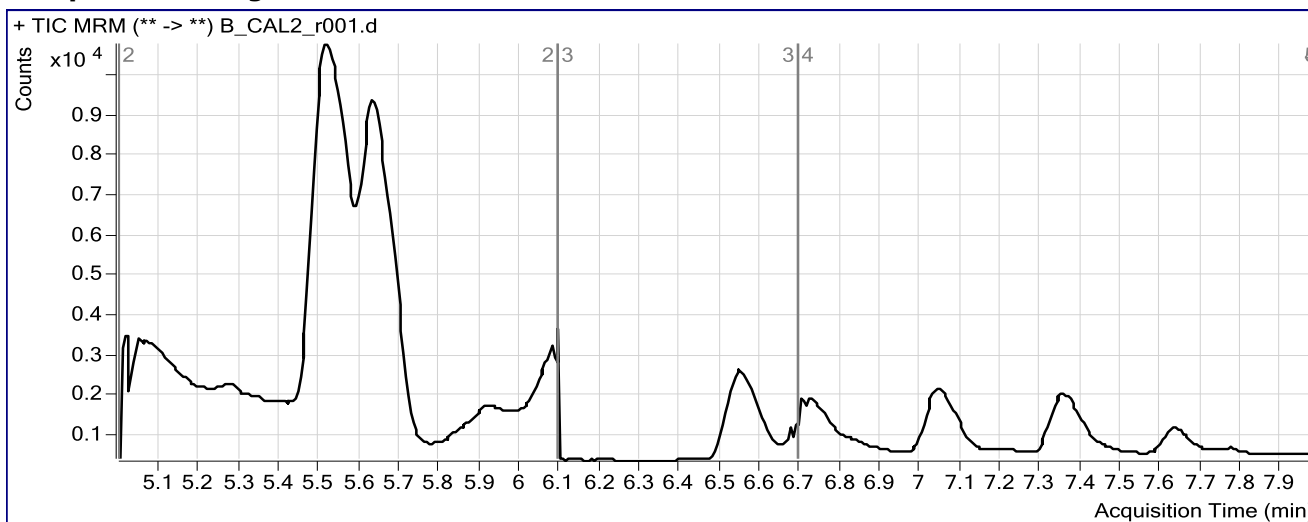
# ISP FORENSICS Pocatello Cannabinoid Analysis Report

**Batch Data Path** C:\MassHunter\Data\2016\Combined\032816 CS\QuantResults\032816 CANN.batch.bin  
**Analysis Time** 3/30/2016 2:42 PM **Analyst Name** ISPUser  
**Report Time** 3/30/2016 2:45 PM **Reporter Name** ISPUser  
**Last Calib Update** 3/30/2016 2:42 PM **Batch State** Processed

## Analysis Info

**Acq Time** 2016-03-28 15:31 **Data File** B\_CAL2\_r001.d  
**Sample Type** Calibration **Sample Name** Blood: 2\_10 ng/mL  
**Dilution** 1 **Acq Method** isp blood cannabinoids Poky 2016.m  
**Position** P2-A3 **Sample Info** c-THC @10ng/mL, all others @2 ng/mL  
**Inj Vol** -1 **Comment** AM 6.1.2 Cannabinoids by LCQQQ

## Sample Chromatogram



## Results

Compound	ISTD Compound	RT	Response	ISTD Resp	Resp Ratio	Final Conc
OH-THC	OH-THC-d3	5.533	8950	34431	0.2599	2.3693
THC-COOH	THC-COOH-d3	5.642	6000	6077	0.9873	10.4859
Cannabidiol	Cannabidiol-d3	6.553	764	3089	0.2474	2.0345
Cannabinol	Cannabinol-d3	7.058	965	5267	0.1831	2.0928
THC	THC-d3	7.369	428	2888	0.1483	1.6744

# ISP FORENSICS

## Pocatello

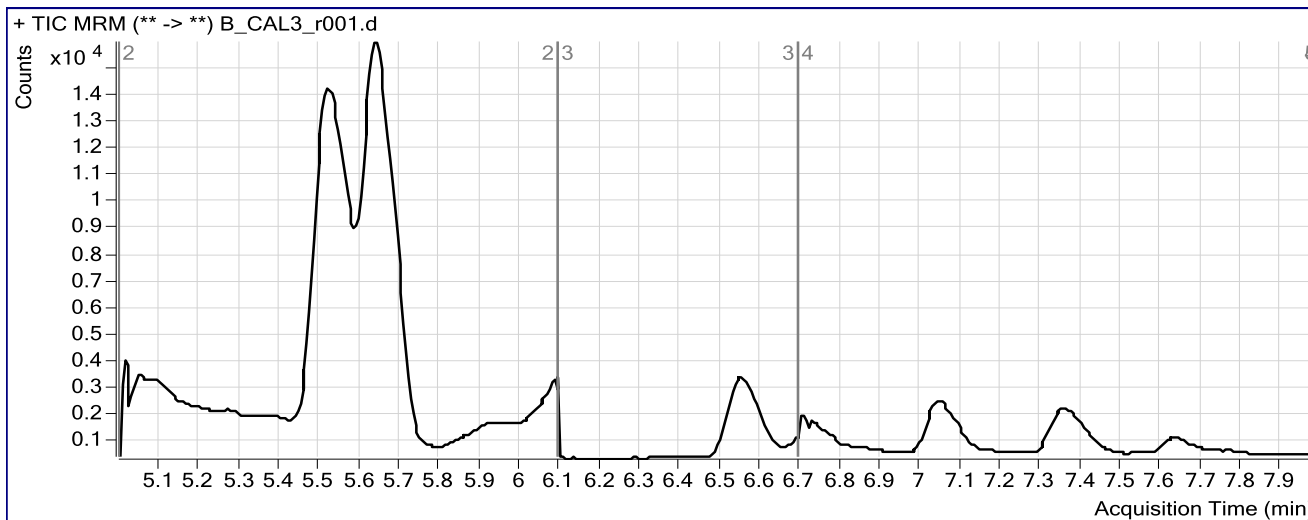
### Cannabinoid Analysis Report

<b>Batch Data Path</b>	C:\MassHunter\Data\2016\Combined\032816 CS\QuantResults\032816 CANN.batch.bin		
<b>Analysis Time</b>	3/30/2016 2:42 PM	<b>Analyst Name</b>	ISPUser
<b>Report Time</b>	3/30/2016 2:45 PM	<b>Reporter Name</b>	ISPUser
<b>Last Calib Update</b>	3/30/2016 2:42 PM	<b>Batch State</b>	Processed

#### Analysis Info

<b>Acq Time</b>	2016-03-28 15:44	<b>Data File</b>	B_CAL3_r001.d
<b>Sample Type</b>	Calibration	<b>Sample Name</b>	Blood: 5_25 ng/mL
<b>Dilution</b>	1	<b>Acq Method</b>	isp blood cannabinoids Poky 2016.m
<b>Position</b>	P2-A4	<b>Sample Info</b>	c-THC @25ng/mL, all others @5 ng/mL
<b>Inj Vol</b>	-1	<b>Comment</b>	AM 6.1.2 Cannabinoids by LCQQQ

#### Sample Chromatogram



#### Results

Compound	ISTD Compound	RT	Response	ISTD Resp	Resp Ratio	Final Conc
OH-THC	OH-THC-d3	5.533	22298	36621	0.6089	5.1783
THC-COOH	THC-COOH-d3	5.648	19006	7549	2.5175	24.4070
Cannabidiol	Cannabidiol-d3	6.553	2079	4111	0.5057	4.8564
Cannabinol	Cannabinol-d3	7.046	1786	5306	0.3367	4.2789
THC	THC-d3	7.357	1194	2714	0.4398	5.7171

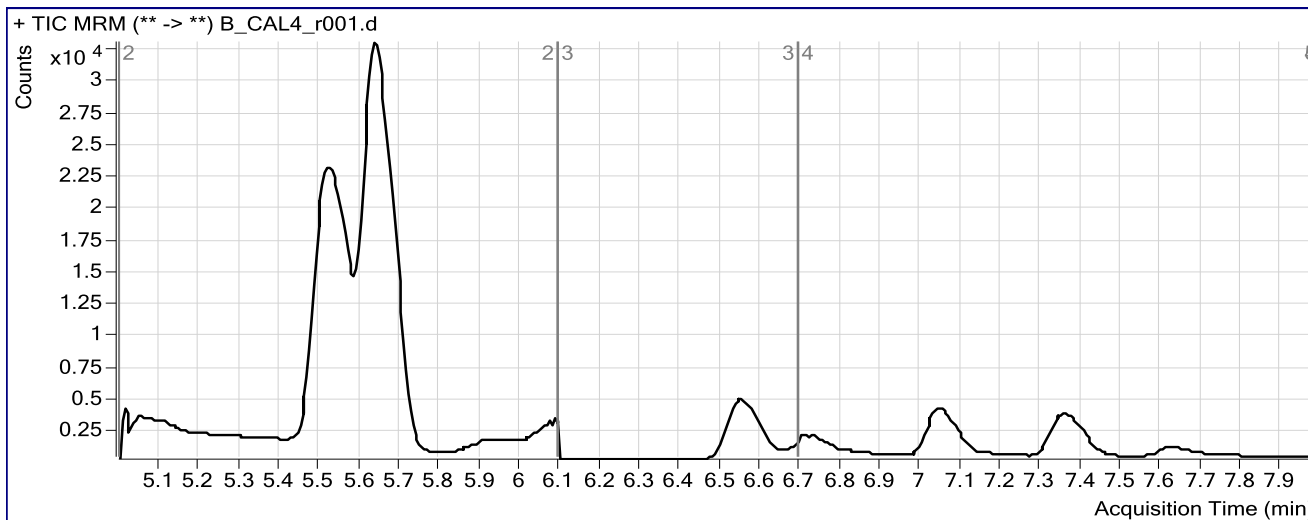
# ISP FORENSICS Pocatello Cannabinoid Analysis Report

**Batch Data Path** C:\MassHunter\Data\2016\Combined\032816 CS\QuantResults\032816 CANN.batch.bin  
**Analysis Time** 3/30/2016 2:42 PM **Analyst Name** ISPUser  
**Report Time** 3/30/2016 2:45 PM **Reporter Name** ISPUser  
**Last Calib Update** 3/30/2016 2:42 PM **Batch State** Processed

## Analysis Info

**Acq Time** 2016-03-28 15:57 **Data File** B\_CAL4\_r001.d  
**Sample Type** Calibration **Sample Name** Blood: 10\_50 ng/mL  
**Dilution** 1 **Acq Method** isp blood cannabinoids Poky 2016.m  
**Position** P2-A5 **Sample Info** c-THC @50ng/mL, all others @10 ng/mL  
**Inj Vol** -1 **Comment** AM 6.1.2 Cannabinoids by LCQQQ

## Sample Chromatogram



## Results

Compound	ISTD Compound	RT	Response	ISTD Resp	Resp Ratio	Final Conc
OH-THC	OH-THC-d3	5.533	56066	47829	1.1722	9.6626
THC-COOH	THC-COOH-d3	5.642	50248	9240	5.4383	50.0187
Cannabidiol	Cannabidiol-d3	6.553	4901	5165	0.9489	9.5873
Cannabinol	Cannabinol-d3	7.052	6505	8404	0.7741	10.3603
THC	THC-d3	7.357	3252	4544	0.7157	9.5431

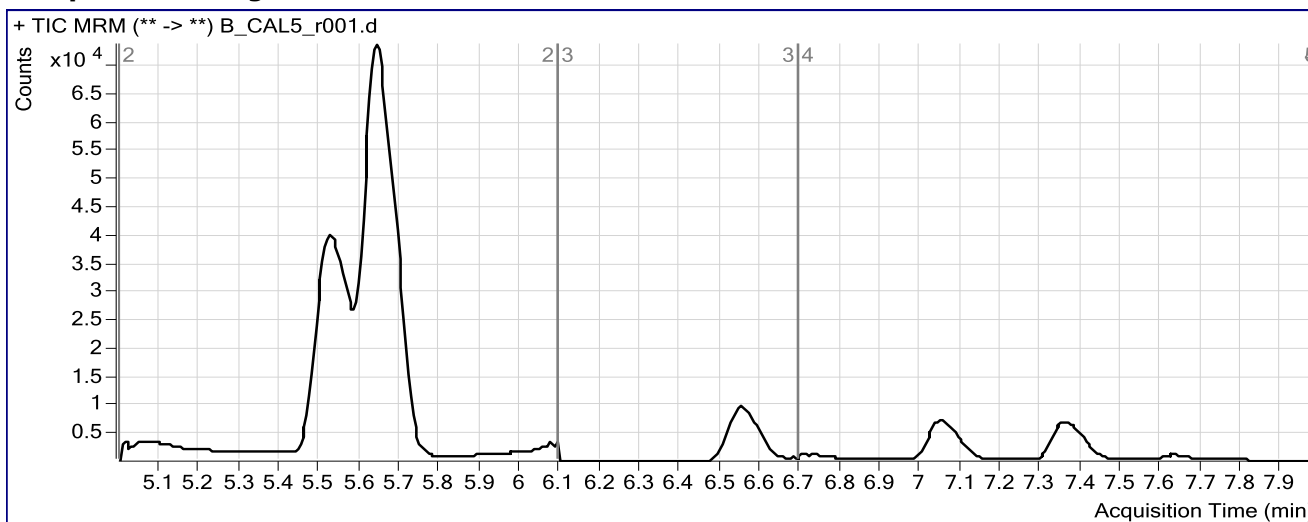
# ISP FORENSICS Pocatello Cannabinoid Analysis Report

**Batch Data Path** C:\MassHunter\Data\2016\Combined\032816 CS\QuantResults\032816 CANN.batch.bin  
**Analysis Time** 3/30/2016 2:42 PM **Analyst Name** ISPUser  
**Report Time** 3/30/2016 2:45 PM **Reporter Name** ISPUser  
**Last Calib Update** 3/30/2016 2:42 PM **Batch State** Processed

## Analysis Info

**Acq Time** 2016-03-28 16:11 **Data File** B\_CAL5\_r001.d  
**Sample Type** Calibration **Sample Name** Blood: 25\_125 ng/mL  
**Dilution** 1 **Acq Method** isp blood cannabinoids Poky 2016.m  
**Position** P2-A6 **Sample Info** c-THC @125ng/mL, all others @25 ng/mL  
**Inj Vol** -1 **Comment** AM 6.1.2 Cannabinoids by LCQQQ

## Sample Chromatogram



## Results

Compound	ISTD Compound	RT	Response	ISTD Resp	Resp Ratio	Final Conc
OH-THC	OH-THC-d3	5.533	136211	45103	3.0200	23.9636
THC-COOH	THC-COOH-d3	5.648	99197	6707	14.7896	125.1080
Cannabidiol	Cannabidiol-d3	6.553	14291	4002	3.5709	35.1868
Cannabinol	Cannabinol-d3	7.052	17514	8992	1.9478	25.7335
THC	THC-d3	7.357	9547	5203	1.8350	25.0654



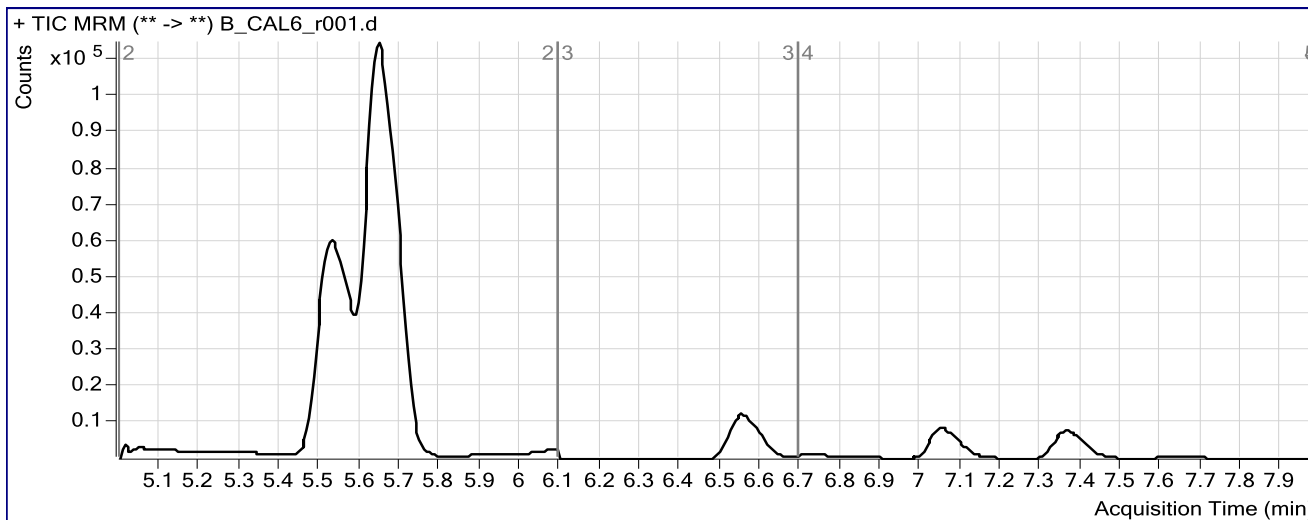
# ISP FORENSICS Pocatello Cannabinoid Analysis Report

**Batch Data Path** C:\MassHunter\Data\2016\Combined\032816 CS\QuantResults\032816 CANN.batch.bin  
**Analysis Time** 3/30/2016 2:42 PM **Analyst Name** ISPUser  
**Report Time** 3/30/2016 2:45 PM **Reporter Name** ISPUser  
**Last Calib Update** 3/30/2016 2:42 PM **Batch State** Processed

## Analysis Info

**Acq Time** 2016-03-28 16:24 **Data File** B\_CAL6\_r001.d  
**Sample Type** Calibration **Sample Name** Blood: 50\_250 ng/mL  
**Dilution** 1 **Acq Method** isp blood cannabinoids Poky 2016.m  
**Position** P2-A7 **Sample Info** c-THC @250ng/mL, all others @50 ng/mL  
**Inj Vol** -1 **Comment** AM 6.1.2 Cannabinoids by LCQQQ

## Sample Chromatogram



## Results

Compound	ISTD Compound	RT	Response	ISTD Resp	Resp Ratio	Final Conc
OH-THC	OH-THC-d3	5.538	239309	35750	6.6940	50.7707
THC-COOH	THC-COOH-d3	5.653	161546	4904	32.9430	249.9805
Cannabidiol	Cannabidiol-d3	6.553	14873	2603	5.7128	53.7847
Cannabinol	Cannabinol-d3	7.052	23865	5629	4.2398	52.6838
THC	THC-d3	7.363	12456	3001	4.1508	57.1814

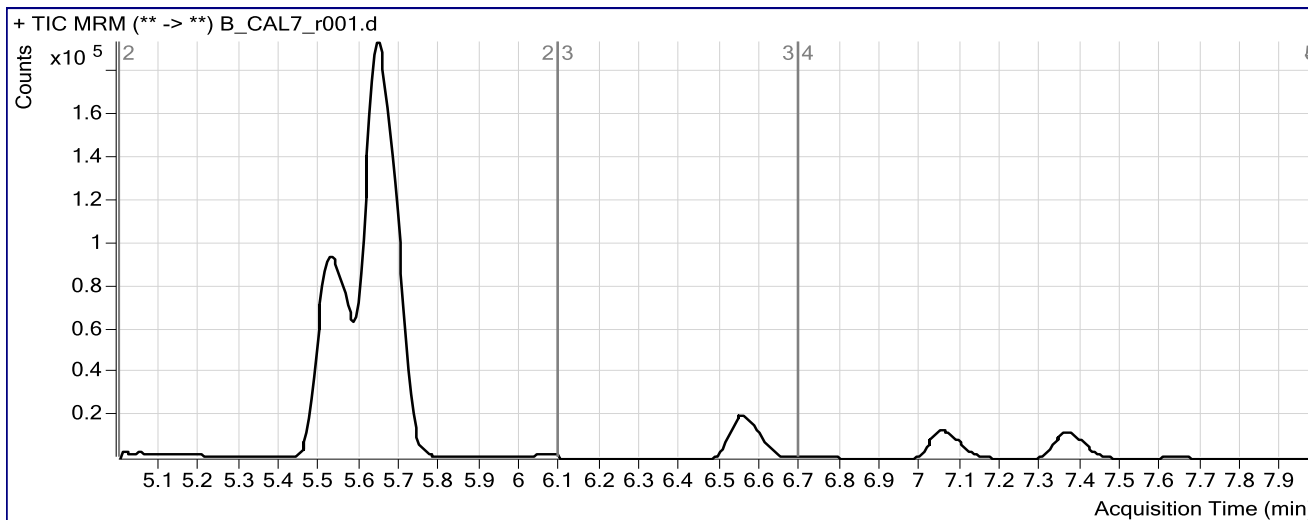
# ISP FORENSICS Pocatello Cannabinoid Analysis Report

<b>Batch Data Path</b>	C:\MassHunter\Data\2016\Combined\032816 CS\QuantResults\032816 CANN.batch.bin		
<b>Analysis Time</b>	3/30/2016 2:42 PM	<b>Analyst Name</b>	ISPUser
<b>Report Time</b>	3/30/2016 2:45 PM	<b>Reporter Name</b>	ISPUser
<b>Last Calib Update</b>	3/30/2016 2:42 PM	<b>Batch State</b>	Processed

**Analysis Info**

<b>Acq Time</b>	2016-03-28 16:37	<b>Data File</b>	B_CAL7_r001.d
<b>Sample Type</b>	Calibration	<b>Sample Name</b>	Blood: 100_500 ng/mL
<b>Dilution</b>	1	<b>Acq Method</b>	isp blood cannabinoids Poky 2016.m
<b>Position</b>	P2-A8	<b>Sample Info</b>	c-THC @500ng/mL, all others @100 ng/mL
<b>Inj Vol</b>	-1	<b>Comment</b>	AM 6.1.2 Cannabinoids by LCQQQ

**Sample Chromatogram**



**Results**

Compound	ISTD Compound	RT	Response	ISTD Resp	Resp Ratio	Final Conc
OH-THC	OH-THC-d3	5.533	405257	28667	14.1367	99.8853
THC-COOH	THC-COOH-d3	5.648	283995	4502	63.0862	421.0373
Cannabidiol	Cannabidiol-d3	6.559	26147	2274	11.4958	97.2493
Cannabinol	Cannabinol-d3	7.052	42411	4872	8.7048	97.4288
THC	THC-d3	7.363	22595	2649	8.5285	117.8898

# ISP FORENSICS

## Pocatello

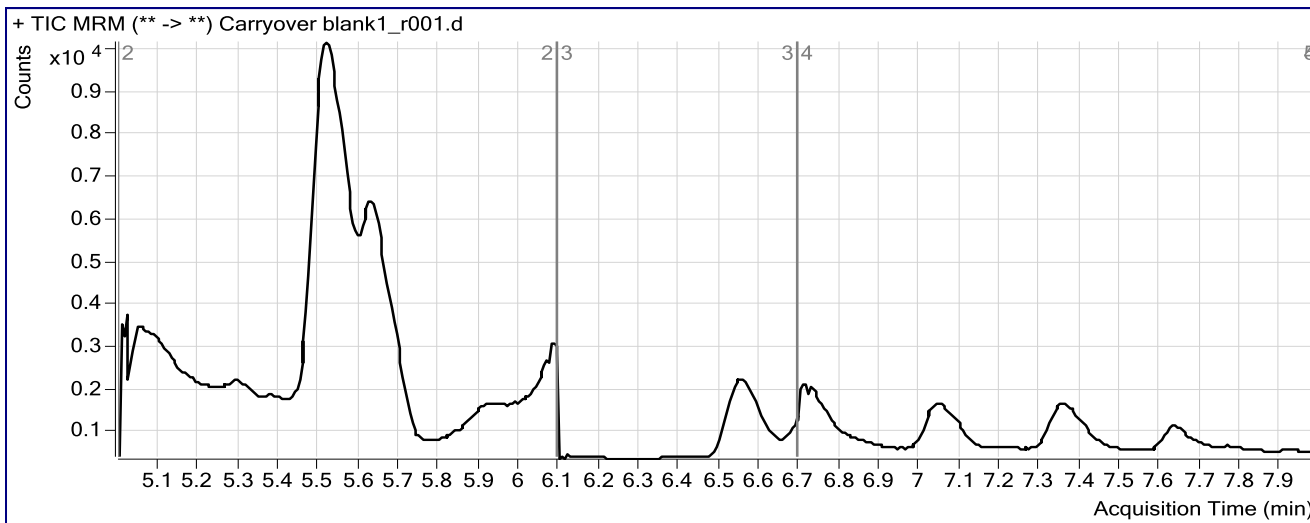
### Cannabinoid Analysis Report

<b>Batch Data Path</b>	C:\MassHunter\Data\2016\Combined\032816 CS\QuantResults\032816 CANN.batch.bin		
<b>Analysis Time</b>	3/30/2016 2:42 PM	<b>Analyst Name</b>	ISPUser
<b>Report Time</b>	3/30/2016 2:45 PM	<b>Reporter Name</b>	ISPUser
<b>Last Calib Update</b>	3/30/2016 2:42 PM	<b>Batch State</b>	Processed

#### Analysis Info

<b>Acq Time</b>	2016-03-28 16:50	<b>Data File</b>	Carryover blank1_r001.d
<b>Sample Type</b>	Blank	<b>Sample Name</b>	Blank
<b>Dilution</b>	1	<b>Acq Method</b>	isp blood cannabinoids Poky 2016.m
<b>Position</b>	P2-A1	<b>Sample Info</b>	
<b>Inj Vol</b>	-1	<b>Comment</b>	AM 6.1.2 Cannabinoids by LCQQQ

#### Sample Chromatogram



# ISP FORENSICS

## Pocatello

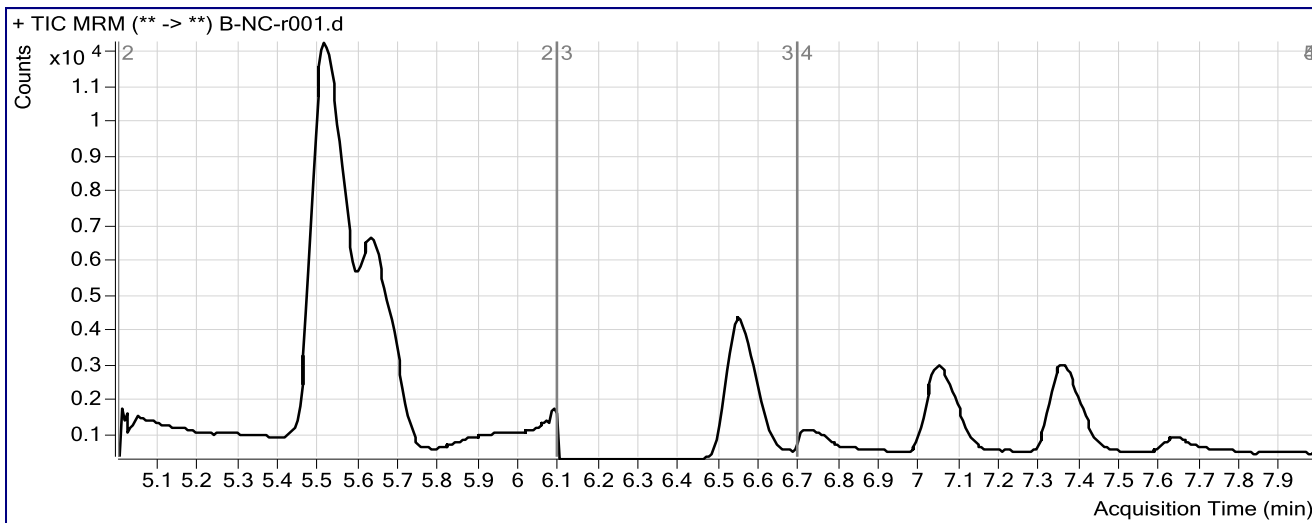
### Cannabinoid Analysis Report

**Batch Data Path** C:\MassHunter\Data\2016\Combined\032816 CS\QuantResults\032816 CANN.batch.bin  
**Analysis Time** 3/30/2016 2:42 PM **Analyst Name** ISPUser  
**Report Time** 3/30/2016 2:45 PM **Reporter Name** ISPUser  
**Last Calib Update** 3/30/2016 2:42 PM **Batch State** Processed

#### Analysis Info

**Acq Time** 2016-03-28 17:04 **Data File** B-NC-r001.d  
**Sample Type** Sample **Sample Name** Blood Negative Control  
**Dilution** 1 **Acq Method** isp blood cannabinoids Poky 2016.m  
**Position** P2-A9 **Sample Info** Negative Blood UTAK Lot B0689  
**Inj Vol** -1 **Comment** AM 6.1.2 Cannabinoids by LCQQQ

#### Sample Chromatogram



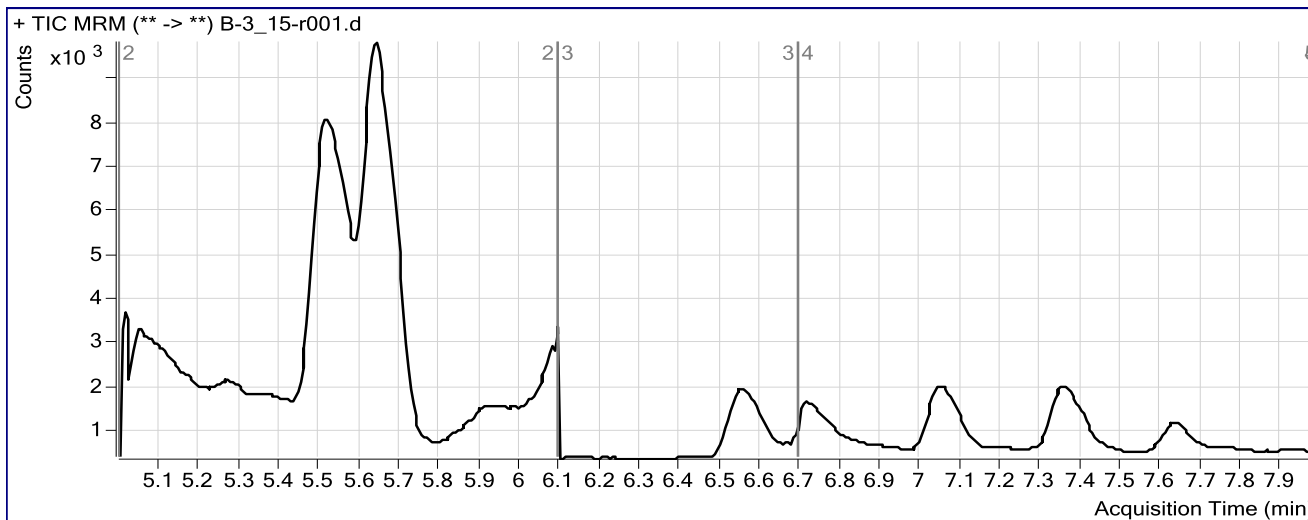
# ISP FORENSICS Pocatello Cannabinoid Analysis Report

**Batch Data Path** C:\MassHunter\Data\2016\Combined\032816 CS\QuantResults\032816 CANN.batch.bin  
**Analysis Time** 3/30/2016 2:42 PM **Analyst Name** ISPUser  
**Report Time** 3/30/2016 2:45 PM **Reporter Name** ISPUser  
**Last Calib Update** 3/30/2016 2:42 PM **Batch State** Processed

## Analysis Info

**Acq Time** 2016-03-28 17:17 **Data File** B-3\_15-r001.d  
**Sample Type** Sample **Sample Name** Blood 3\_15ngmL  
**Dilution** 1 **Acq Method** isp blood cannabinoids Poky 2016.m  
**Position** P2-B1 **Sample Info** c-THC @15ng/mL, all others @3 ng/mL  
**Inj Vol** -1 **Comment** AM 6.1.2 Cannabinoids by LCQQQ

## Sample Chromatogram



## Results

Compound	ISTD Compound	RT	Response	ISTD Resp	Resp Ratio	Final Conc
THC-COOH	THC-COOH-d3	5.648	8938	5371	1.6640	16.6875
Cannabinol	Cannabinol-d3	7.052	1271	4164	0.3052	3.8337
THC	THC-d3	7.352	721	2555	0.2822	3.5310

# ISP FORENSICS

## Pocatello

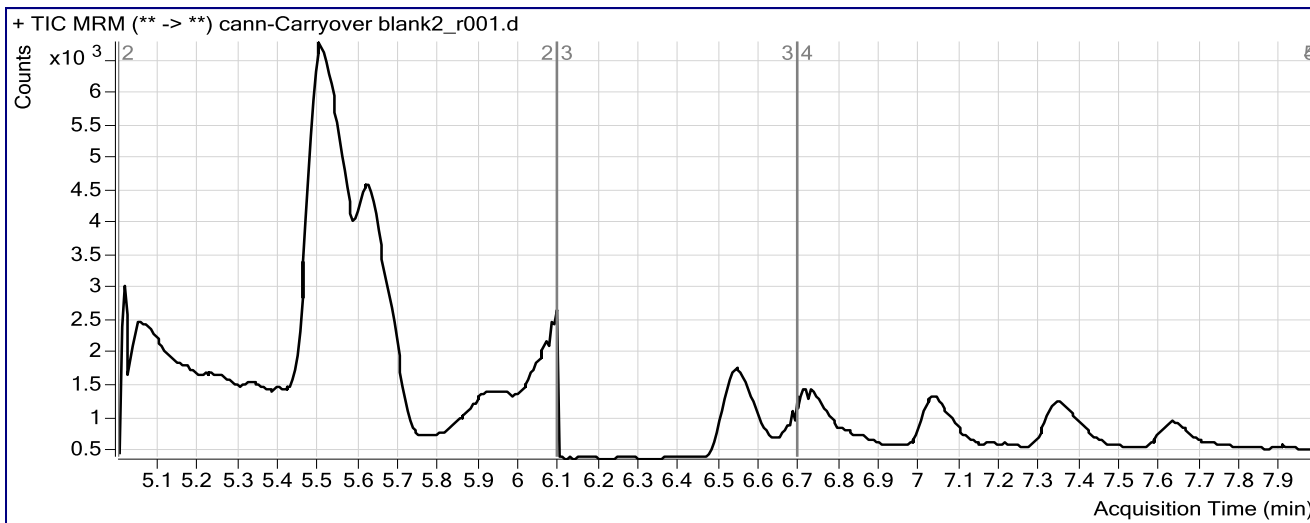
### Cannabinoid Analysis Report

<b>Batch Data Path</b>	C:\MassHunter\Data\2016\Combined\032816 CS\QuantResults\032816 CANN.batch.bin		
<b>Analysis Time</b>	3/30/2016 2:42 PM	<b>Analyst Name</b>	ISPUser
<b>Report Time</b>	3/30/2016 2:46 PM	<b>Reporter Name</b>	ISPUser
<b>Last Calib Update</b>	3/30/2016 2:42 PM	<b>Batch State</b>	Processed

#### Analysis Info

<b>Acq Time</b>	2016-03-28 19:43	<b>Data File</b>	cann-Carryover blank2_r001.d
<b>Sample Type</b>	Blank	<b>Sample Name</b>	Blank
<b>Dilution</b>	1	<b>Acq Method</b>	isp blood cannabinoids Poky 2016.m
<b>Position</b>	P2-A1	<b>Sample Info</b>	
<b>Inj Vol</b>	-1	<b>Comment</b>	AM 6.1.2 Cannabinoids by LCQQQ

#### Sample Chromatogram



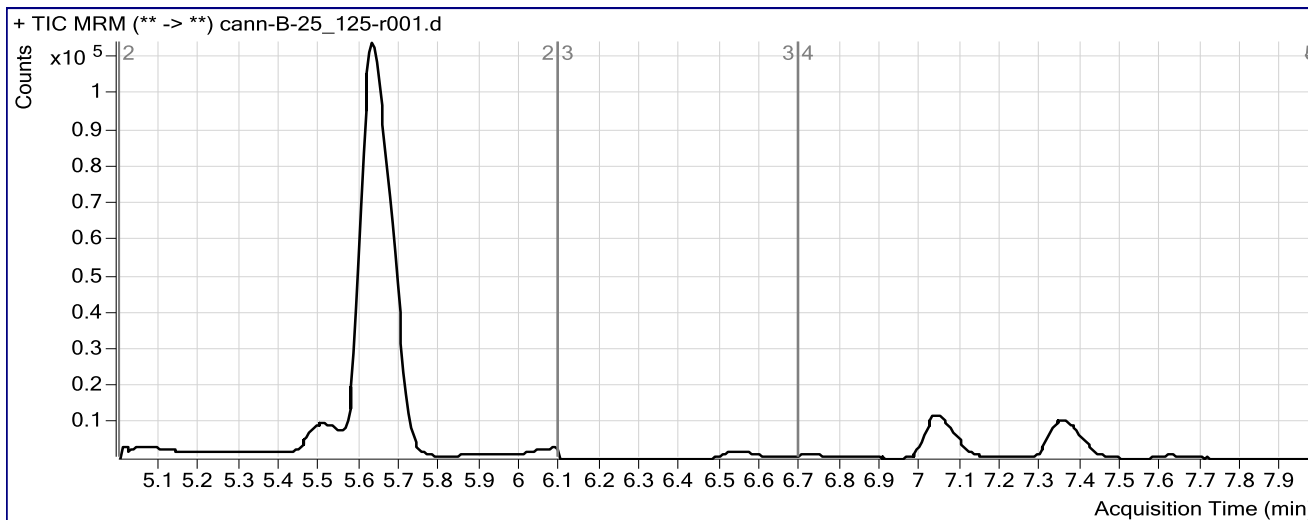
# ISP FORENSICS Pocatello Cannabinoid Analysis Report

**Batch Data Path** C:\MassHunter\Data\2016\Combined\032816 CS\QuantResults\032816 CANN.batch.bin  
**Analysis Time** 3/30/2016 2:42 PM **Analyst Name** ISPUser  
**Report Time** 3/30/2016 2:46 PM **Reporter Name** ISPUser  
**Last Calib Update** 3/30/2016 2:42 PM **Batch State** Processed

## Analysis Info

**Acq Time** 2016-03-28 19:56 **Data File** cann-B-25\_125-r001.d  
**Sample Type** Sample **Sample Name** Blood 25\_125ng/mL  
**Dilution** 1 **Acq Method** isp blood cannabinoids Poky 2016.m  
**Position** P2-C3 **Sample Info** c-THC @125ng/mL, all others @25 ng/mL  
**Inj Vol** -1 **Comment** AM 6.1.2 Cannabinoids by LCQQQ

## Sample Chromatogram



## Results

Compound	ISTD Compound	RT	Response	ISTD Resp	Resp Ratio	Final Conc
OH-THC	OH-THC-d3	5.538	899	39700	0.0227	0.4455
THC-COOH	THC-COOH-d3	5.636	195122	7353	26.5367	208.3962
Cannabinol	Cannabinol-d3	7.041	36862	5848	6.3029	74.3893
THC	THC-d3	7.352	18903	3597	5.2556	72.5023